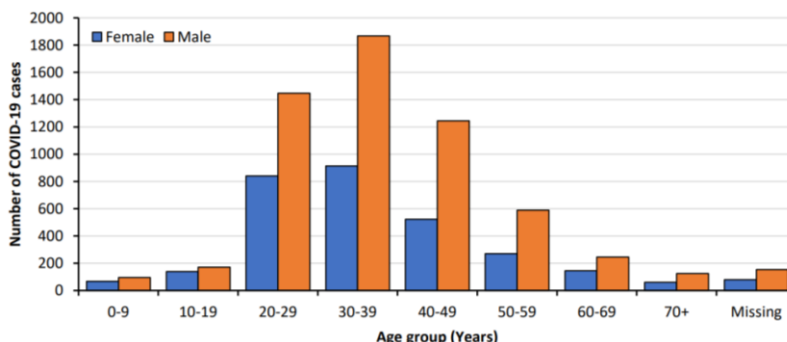


MALAWI HIGHLIGHTS

- ❖ Malawi declared a state of national disaster on 12 January, 2021.
- ❖ Assistance for oxygen supply to support case management being provided.
- ❖ Two Cabinet ministers died during the reporting week due to COVID-19.
- ❖ Public gatherings have been restricted to no more than 50 people.
- ❖ Schools closed for 3 weeks, with boarding students asked to remain on campus.
- ❖ 54,484 households are being supported with Lean Season Response cash distributions.
- ❖ 1,250,000 people reached with COVID-19 messages through local channels.
- ❖ Distributions of take-home school meal rations to be completed by this week.



Age and sex distribution of COVID-19 cases in Malawi as of 10 Jan 2021. Source: PHIM

MALAWI SUMMARY

- ❖ 12,470 cases, 5,910 active
- ❖ 134 lost to follow-up
- ❖ 76 under investigation
- ❖ 5,903 recovered, 314 deaths
- ❖ 108,775 tests done

GLOBAL SUMMARY

- ❖ 93 194 922 cases
- ❖ 2 014 729 deaths
- ❖ Over 66 million recovered
- ❖ Cases in 223 territories

REGIONAL SUMMARY (Africa)

- ❖ Over 2.5 million cases
- ❖ Over 60,000 deaths
- ❖ Over 2 million recovered
- ❖ All 54 countries affected

EMERGENCY APPEAL FINANCIAL TRACKING OVERVIEW ([financial tracking tool](#))

Funding Required (US\$)	Reported Funding (US\$)	% Funded	No. of Donors	No. of Operational Partners
212M	103.5M	48	30	49

COMPREHENSIVE COVID-19 PREPAREDNESS AND RESPONSE



COORDINATION

Coordinated by: DoDMA

- ❖ The INGO consortium has conducted health, WASH and DRR rapid needs assessments and interventions in connection to COVID-19 preparedness and mitigation measures.
- ❖ A [calendar of meetings](#), information [repository](#), [5W](#) interactive dashboard and a [financial tracking tool](#) are available to support coordination of the COVID-19 response.



INFORMATION & COMMUNICATION

Coordinated by: Ministry of Information (MoI)
Support from UNICEF, United Purpose, Oxfam & DCT

- ❖ About 1,250,000 people were reached with COVID-19 messages through local communication channels like radio programs, jingles and vans with megaphones supported by MRCS.

Gaps and Needs

- ❖ Laxity in adherence to COVID 19 prevention measures that needs to be strengthened further at different levels



HEALTH

Coordinated by: Ministry of Health (MoH) & WHO
Support from UNICEF & Malawi Red Cross Society

1,197 people supported with contact tracing

- ❖ **Presidential address on COVID-19 situation** in Malawi provided more measures.
- ❖ **About 1,197 people were supported with contact tracing** in two districts by USAID ONSE. USAID ONSE also supported Zomba's maximum security prison with **mass screening of 153 persons and with specimen collection** in the locations of Nasawa, Matawale, Kalimbuka, Namasalima.
- ❖ **Scaling up testing and service delivery including oxygen capacity in Mzuzu and logistical support** to surveillance, airtime, transport, disinfectants and PPEs supported by UNICEF.
- ❖ **Four 10kg cylinders of oxygen** were provided to Bwaila Hospital last weekend (January 9/10, 2021) supported by USAID ONSE.
- ❖ **An oxygen plant to generate 1.15 million litres of oxygen per day** was earlier installed at Kamuzu Central Hospital to support COVID-19 case management, thanks to collaboration among Ministry of Health, UNICEF, WHO and UK Aid.
- ❖ **A National Vaccine Deployment Plan** is now in place with legal consultation on liabilities for COVID vaccination cleared by Attorney General's Office. Vaccine deployment plan is under way with support from WHO, UNICEF and partners.

Gaps and Needs

- ❖ There is need to promote innovative sensitisation for people to include COVID-19 preventive measures as day-to-day behaviours



TRANSPORT AND LOGISTICS

Coordinated by: Ministry of Transport and Works (MTW) & WFP. Support from UNICEF

- ❖ **Erection of Mobile Storage Units at Queen Elizabeth Central Hospital** for additional space has been supported by WFP. Further, WFP has supported the Ministry of Education with the erection of a Mobile Storage Unit (MSU) at Blantyre Secondary School to enhance social distancing for students sitting their final exams.
- ❖ A vehicle was released by USAID ONSE to **support Lilongwe DHO with contact tracing activities** during the week leading up to New Year's Day.

Gaps and Needs

- ❖ Only 8% of Logistics Cluster activities are funded with a gap of about \$1.05m for critical response interventions (storage and transport capacity, coordination and information sharing, and stock reporting). Without immediate support, WFP will not be able to continue supporting the national COVID-19 response.



WASH

Coordinated by Ministry responsible for Irrigation and Water Development & UNICEF

282,651 people reached with WASH supplies

- ❖ **Over 282,651 people were reached with hand-washing and Covid sensitization messages** in over 75 strategic points (big shops, mobile markets, churches, hospitals, fish markets, Take-Home Ration distribution points and Lean Season Response Cash Distribution Points) in 16 districts supported by Red Cross Movement partners SWISS, Phillip Morris International (PMI), UNICEF, WFP and GIZ.

Needs and Gaps

- ❖ With the rise of COVID-19 cases, there is a huge need to preposition more PPE to support the fight against the virus.



PROTECTION

Coordinated by: Ministry of Gender, Community Development and Social Welfare, UNICEF & UN Women
Support includes Oxfam

1,532,651 people reached with messages on protection, Gender and Inclusion

- ❖ The **assessment and verification exercise of the COVID-19 Urban Cash Interventions (CUCI)** targeting slum areas in the country's four main cities was supported with a sum of MK30 million by ILO's social protection project. The estimates were that in these four cities close to 187, 718 households would need a monthly cash transfer of MK35,000 per month for four to six months for them to cope up with the economic effects of COVID-19.
- ❖ **About 1,532,651 people were reached with messages on protection, Gender and Inclusion** through door-to-door campaigns and strategic hand-washing facilities in 12 districts supported by Red Cross Movement partners, WFP, UNICEF and GIZ.
- ❖ **Around 23,500 people** in 7 districts were reached with **community-based Mental Health and Psychosocial Support (MHPSS)** by District Social Welfare Offices with support from UNICEF. This includes 484 people reached during the reporting period in Blantyre district.

Needs and Gaps

- ❖ Some districts are yet to be oriented on Protected Geographical Indication (PGI) due to delayed funding.



FOOD SECURITY

- ❖ Supported by WFP, **Lean Season Response cash distributions** has been completed in three districts. Cumulatively, out of 57,426 targeted households, **54,484**

Coordinated by:
Department of Disaster
Management Affairs
(DoDMA) & WFP

54,484 households reached
with Lean season cash
distribution

- households were supported with cash transfers amounting to MWK1,258,580,400 representing 95% coverage, with 5% yet to be completed in two districts.
- ❖ **About 4,000 people were reached with cash transfers under the COVID-19 Boma response** in Machinga supported by WFP.
 - ❖ **About 281 metric tonnes of maize were distributed** by Malawi Government as part of the rural lean season response in Mangochi with support from WFP.
 - ❖ **Minimum Expenditure Basket-MEB Bulletin round 16 and 17 were published** by WFP. Key results include:
 - The total value of the SMEBs across all regions and in urban areas increased slightly since the last reporting period following increases in the prices of maize, pulses, vegetable oil, fish, and milling costs.
 - Local markets still have abundant maize grain supplies. While maize prices continue to slowly increase, the current national average is MK 199/kg, which is below last year's average even with the onset of the lean season.
 - Markets have large quantities of fresh cassava since this commodity is at the peak of its season, trading at an average of MK 268/kg, a price relatively lower than what has been observed over the previous five rounds.
 - ❖ **Distribution of Take-Home Ration was finished by MRCS.** Cumulatively, out of 570,082 learners in seven districts from 452 primary schools, 326,174 were reached with 1,239,281kg of CSB. 203,167 learners were reached with an amount worth MWK 711,084,500 supported by WFP and MRCS.



EDUCATION

Coordinated by: Ministry of
Education, Science and
Technology (MoEST); Save
the Children and UNICEF
Support includes WFP &
PACHI

- ❖ The Ministry of Education (MoE) is **undertaking a survey across the country to capture the status of children's return to school, teacher preparedness, schools' hygiene standards, and provision of remedial and accelerated learning programmes** as per the school reopening guidelines. In the first and second weeks of December 2020, data was collected from 337 sampled schools in 15 districts and is currently being analysed by MoE. In addition, UNICEF has partnered with Malawi Red Cross Society (MRCS) to conduct third party monitoring of the status of schools reopening in the country.
- ❖ The Ministry has requested 1,300 tents for 650 primary schools (2 tents for each school) and 100 tents for 50 secondary schools (2 tents for each secondary school). UNICEF, in collaboration with education cluster members, is supporting the Ministry in mobilizing resources to decongest the classrooms to protect learners.



AGRICULTURE

Coordinated by:
Ministry of Agriculture (MoA)
& FAO

- ❖ The Ministry of Agriculture, with technical support from FAO, continues to collect data under **the Emergency Agriculture and Food Security Surveillance System (Ema-FSS)** in 18 targeted districts. The surveillance system documents real-time information on the status of food availability/security, performance of the agricultural produce markets, prevalence of animal diseases and access to veterinary services, as well as crop production in the time of COVID-19.
- ❖ Supporting the Ministry of Agriculture with a **COVID-19 emergency response package** targeting 15 districts. The response includes distribution of fertilizers, legumes, cereals, vegetables, handwashing materials (soap and buckets) as well as information, education and communication (IEC) materials. The response is supported by FAO and implemented under the European Union funded KULIMA and Afikepo programmes.

Needs and gaps

- ❖ As the number of COVID-19 cases continue to rise in the country, there is need to support the provision of additional personal protective equipment to extension workers to enable them to keep safe and support farmers effectively.



NUTRITION

- ❖ *No updates available.*

CONTACTS:

Sitrep Coordinator
Head of RCO
UN Communications
WHO

bennet.phunyanya@one.un.org
bonnel@un.org
phillip.pemba@one.un.org
chingayipee@who.int

Note: The frequency of this SitRep (weekly) will be reviewed regularly.